

---

**National Association of Black Accountants, Inc.**

**Nashville Chapter**

*Corporate Partnership Program 2005-2006*

---



*"Lifting As We Climb"*

---

**National Association of Black Accountants, Inc.**  
**Nashville Chapter**  
*Corporate Partnership Program 2005-2006*

---

<b>TABLE OF CONTENTS</b>	<b>Page</b>
<b>Organization Overview</b>	
Mission Statement	2
National Organization History & Structure	3
National Membership	4
National Programs & Services	5-6
NABA's Professional Chapter Network	7
<b>Chapter Overview</b>	
Local Programs & Services	8-10
2005-2006 Chapter Officers and Committee Chairpersons	11-12
<b>Local Corporate Partnership Program</b>	13-14
<b>Corporate Partnership Enrollment Form</b>	15

---

**National Association of Black Accountants, Inc.**  
**Nashville Chapter**  
*Corporate Partnership Program 2005-2006*

---

**MISSION and GOALS**

*The mission of the National Association of Black Accountants, Inc. (NABA) is to address the professional needs of its members and to build leaders that shape the future of the accounting and finance professions, with an unfaltering commitment to inspire the same in their successors. NABA is dedicated to uniting accountants and other business professionals, as well as accounting and business students who are committed to professional and academic excellence. NABA's goals are:*

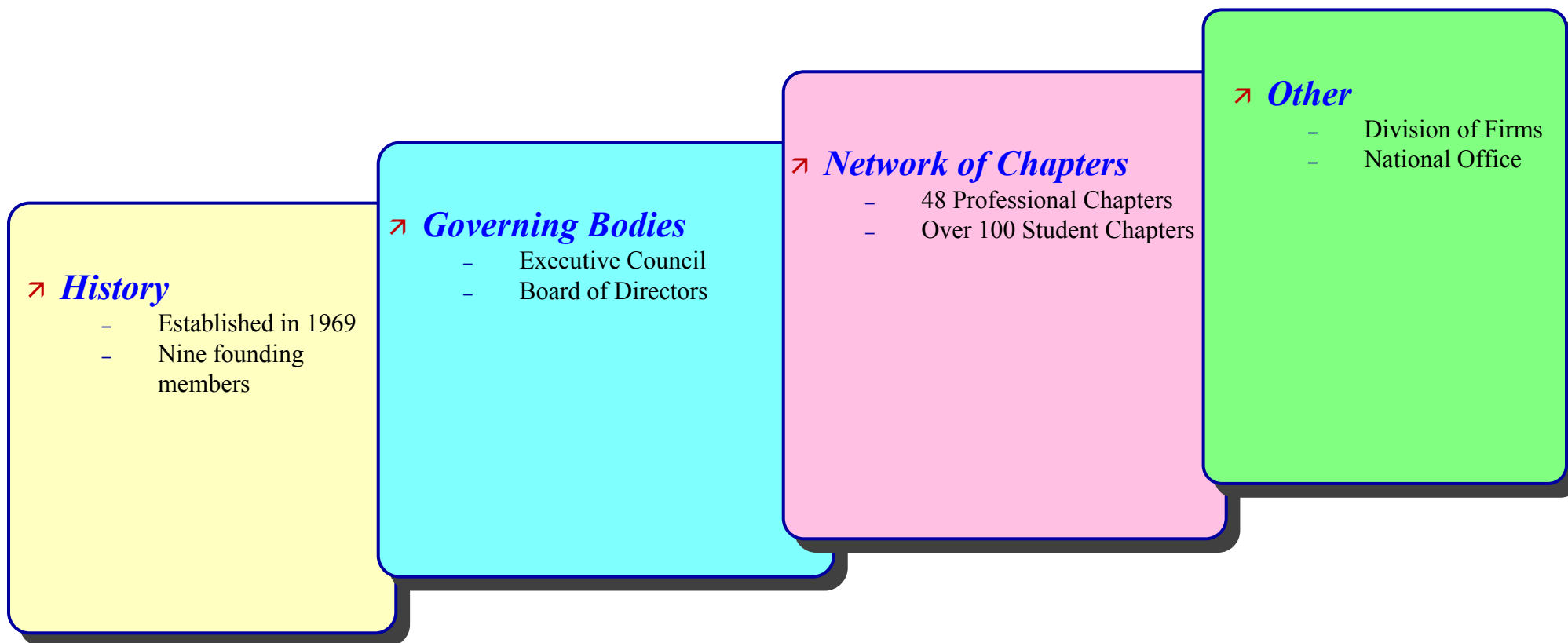
- To promote and develop the professional skills of its members;*
- To encourage and assist African American students in entering the accounting profession;*
- To provide opportunities for members to fulfill their civic responsibilities;*
- To promote public confidence in its members and the services it provides;*
- To encourage cordial relations among members and cooperative relationships with other professionals;*
- To represent the interests of current and prospective African American accounting and business professionals;*
- To ensure long-term financial stability and provide adequate resources to implement chapter, regional, and national programs and;*
- To ensure that chapters operate at an effective level*

---

**National Association of Black Accountants, Inc.**  
**Nashville Chapter**  
*Corporate Partnership Program 2005-2006*

---

## NATIONAL ORGANIZATION HISTORY & STRUCTURE



---

**National Association of Black Accountants, Inc.**  
**Nashville Chapter**  
*Corporate Partnership Program 2005-2006*

---

**NATIONAL MEMBERSHIP**

➤ **3200 Professional Members**

- 51% Employed in Corporate America
- 23% Employed in Public Accounting
- 13% Employed by the Government
- 45% Hold Professional Certifications (CPA, CMA, CIA, CFP)
- 40% Have Advanced Degrees
  - Disbursed - 22% Central US, 42% Eastern US, 18% Southern US and 19% Western US

➤ **2200 Student Members**

Represent over 100 Colleges

➤ **International Outreach**

- Association for the Advancement of Black Accountants in South Africa

---

**National Association of Black Accountants, Inc.**  
**Nashville Chapter**  
*Corporate Partnership Program 2005-2006*

---

**NATIONAL PROGRAMS & SERVICES**

**Annual National Convention**

- 2005 - Detroit, MI
- 2006 - Miami, FL

**Regional Student Conferences**

- Held annually in October in the Central, Eastern, Southern and Western Regions of the United States
- 2005 - Southern Region Student Conference held in Atlanta, GA (nabasr.org)

**National Student Scholarships**

- Over \$5 million have been awarded since inception

---

**National Association of Black Accountants, Inc.**  
**Nashville Chapter**  
*Corporate Partnership Program 2005-2006*

---

**NATIONAL PROGRAMS & SERVICES**

➤ ***Center for Advancement of  
Minority Accountants***

- College Seminar Series
- Middle and High School Programs
- Research
- Resource/Information Center
- Leadership Institute
- Issues-Based Conferences

➤ ***Accounting Career  
Awareness Program  
(ACAP)***

- Annual one-week summer residency program for high school students held at a local college or university designed to promote awareness of the accounting profession
- Endorsed by the American Institute of Certified Public Accountants, the Certified Public Accountants Society of Executives Association, and various State Societies of CPAs.

➤ ***Division of Firms***

- Established in 1986
- 48 member firms
- Mission is to address the needs of minority accounting financial services firms

---

**National Association of Black Accountants, Inc.**  
**Nashville Chapter**  
*Corporate Partnership Program 2005-2006*

---

**NABA's PROFESSIONAL  
CHAPTER NETWORK**

Atlanta, Georgia  
Austin Cen-Tex, Texas  
Baltimore, Maryland  
Baton Rouge, Louisiana  
Birmingham, Alabama  
Boston, Massachusetts  
Charlotte, North Carolina  
Chicago, Illinois  
Cincinnati, Ohio  
Cleveland, Ohio  
Columbia, South Carolina  
Columbus, Ohio  
Dallas/Fort Worth, Texas  
Denver, Colorado  
Detroit, Michigan  
Flint, Michigan  
Greater Wilmington, Delaware  
Houston, Texas  
Indianapolis, Indiana  
Kansas City, Missouri  
Lansing, Michigan  
Los Angeles, California  
Louisville, Kentucky  
Memphis, Tennessee  
Metro-Washington, DC

Miami, Florida  
Milwaukee, Wisconsin  
Minneapolis/St. Paul, Minnesota  
**Nashville, Tennessee**  
New Orleans, Louisiana  
New York, New York  
Northern, (Plainfield), New Jersey  
Orlando, Florida  
Philadelphia, Pennsylvania  
Phoenix, Arizona  
Pittsburgh, Pennsylvania  
Portland, Oregon  
Research Triangle Park, (Raleigh/Durham), North Carolina  
Richmond, Virginia  
Sacramento, California  
St. Louis, Missouri  
San Francisco, California  
Seattle, Washington  
Southern New England, (Straford), Connecticut  
Tallahassee, Florida  
Tampa Bay, Florida  
Triad, (Winston-Salem), North Carolina  
Tulsa, Oklahoma

---

**National Association of Black Accountants, Inc.**  
**Nashville Chapter**  
*Corporate Partnership Program 2005-2006*

---

**LOCAL PROGRAMS & SERVICES**

**Annual Giving Campaign**



- Initiative to raise scholarship funds for NABA student chapter members
- 2006 Goal: Award 10 scholarships

**Student Chapter Programs**

- Mentoring Program
- Annual “NABA’s Day Out”

**Southern Region Student Conferences**

- Held annually in October
- Chapter sponsors NABA student members for conference participation

---

**National Association of Black Accountants, Inc.**  
**Nashville Chapter**  
*Corporate Partnership Program 2005-2006*

---

➤ **LOCAL PROGRAMS & SERVICES**

**Volunteer Income Tax Assistance (VITA)**

Annual Chapter participation, with the IRS, to provide tax assistance to low income tax payers

**Accounting and Financial Management Workshops**

Small Business Accounting

Church Financial Management Workshops

**Professional Development**

General membership meeting each month featuring speakers, networking opportunities and ability to earn CPE credits



---

**National Association of Black Accountants, Inc.**  
**Nashville Chapter**  
*Corporate Partnership Program 2005-2006*

---

**LOCAL PROGRAMS & SERVICES**

**Publicity**

- Quarterly newsletter
- Job Announcements
- Web page -- [www.nabanashville.org](http://www.nabanashville.org)



**Programs in the Pipeline**

- ACAP
- MoneySmart™ Adult Education Program

---

**National Association of Black Accountants, Inc.**  
**Nashville Chapter**  
*Corporate Partnership Program 2005-2006*

---

**2005-2006 Chapter Officers and Executive Board**

**President**

Vincent B. Dixie  
Equity Plus Mortgage

**Vice President**

Alma Alexander, CPA  
Centennial Medical Center

**Treasurer**

Chelsea Bates  
HCA, Inc.

**Secretary**

Open

**Historian**

Jay B. Mercer  
Information Connection, LLC

**Immediate Past President**

Jacqueline Starnes  
Ernst & Young LLC

**Ex-Officio**

Thomas P. Stewart  
Bridgestone Firestone, Inc.

**Ex-Officio**

Marshall Tabb  
Information Connection, LLC

---

**National Association of Black Accountants, Inc.**  
**Nashville Chapter**  
*Corporate Partnership Program 2005-2006*

---

**2005-2006 Committee Chairpersons**

**Membership Services**

Jacqueline Starnes  
Ernst & Young LLC

**Community Affairs**

Kisha Scruggs  
Ernst & Young LLC

**Student Affairs**

Pam Borders  
Centennial Medical Center

**Fundraising**

Maurice Danner  
Suntrust Bank

**Corporate Sponsorship**

Marshall Tabb  
Information Connection, LLC

**Professional Development**

Marshall Tabb  
Information Connection, LLC

**Public Relations**

Alma Alexander, CPA  
Centennial Medical Center

**Social**

Michael Stanley  
Capital Financial Group LLC/Mass Mutual

---

**National Association of Black Accountants, Inc.**  
**Nashville Chapter**  
*Corporate Partnership Program 2005-2006*

---

**LOCAL CORPORATE SPONSORSHIP PROGRAM**

**Purpose**



- Create mutually rewarding relationships for the corporate community and NABA
- Provide financial assistance to NABA Professional and Metropolitan Nashville Student Chapter programs
- Enable corporations and individuals to proactively participate in minority development and recruitment
- Promote diversity of the Metropolitan Nashville area workforce
- Provide Corporate partners opportunities to showcase their business

**Participation**

- Funding provides for academic scholarships, Professional and Student Chapter Program costs
- Event Sponsorship
  - Southern Region Student Conference
  - Annual Golf Tournament

---

# **National Association of Black Accountants, Inc.**

## **Nashville Chapter**

### ***Corporate Partnership Program 2005-2006***

#### **Levels of Sponsorship**

---

- **Corporate Sponsor (\$7,500)**
  - ↗ Three (3) Scholarships in the corporation's name
  - ↗ Sponsorship of students to Annual Southern Region Student Conference\*
  - ↗ Opportunity to participate as a corporate sponsor at the Student Conference\*\*
  - ↗ One (1) Foursome at the Annual Golf Tournament
  - ↗ One (1) Corporate Hole Sponsorship at the Annual Golf Tournament
  - ↗ Access to professional and student members for career recruitment opportunities
  - ↗ Host our Metropolitan Nashville Student Chapter's "NABA Day Out"
- **Corporate Partner (\$5,000)**
  - ↗ Two (2) Scholarships in the corporation's name
  - ↗ Sponsorship of students to Annual Southern Region Student Conference\*
  - ↗ Opportunity to participate as a corporate sponsor at the Student Conference\*\*
  - ↗ One (1) Foursome at the Annual Golf Tournament
  - ↗ One (1) Corporate Hole Sponsorship at the Annual Golf Tournament
  - ↗ Access to professional and student members for career recruitment opportunities
  - ↗ Host our Metropolitan Nashville Student Chapter's "NABA Day Out"
- **Corporate Contributor (\$3,000)**
  - ↗ One (1) Scholarship in the corporation's name
  - ↗ Sponsorship of students to Annual Southern Region Student Conference\*
  - ↗ Opportunity to participate as a corporate sponsor at the Student Conference\*\*
  - ↗ One (1) Foursome at the Annual Golf Tournament
  - ↗ Access to professional and student members for career recruitment opportunities
  - ↗ Host our Metropolitan Nashville Student Chapter's "NABA Day Out"
- **Corporate Supporter (\$1,500)**
  - ↗ One (1) Scholarship in the corporation's name
  - ↗ Sponsorship of students to Annual Southern Region Student Conference\*
  - ↗ Opportunity to participate as a corporate sponsor at the Student Conference\*\*
  - ↗ Access to professional and student members for career recruitment opportunities
  - ↗ Host our Metropolitan Nashville Student Chapter's "NABA Day Out"

---

**National Association of Black Accountants, Inc.**  
**Nashville Chapter**  
*Corporate Partnership Program 2005-2006*

---

***Corporate Partnership Enrollment Form***

**Company Name:** \_\_\_\_\_  
**Mailing Address:** \_\_\_\_\_  
**City/State/Zip Code:** \_\_\_\_\_  
**Company Representative:** \_\_\_\_\_  
**Telephone Number:** \_\_\_\_\_

**Local Participation Levels**

(Annual commitment amount): **2005-2006**

- Corporate Sponsor (\$7,500) \$ \_\_\_\_\_
- Corporate Partner (\$5,000) \_\_\_\_\_
- Corporate Contributor (\$3,000) \_\_\_\_\_
- Corporate Supporter (\$1,500) \_\_\_\_\_
- TOTAL** \$ \_\_\_\_\_

\*\*Additional registration fees apply.

\*Covers hotel accommodations and registration.

**Make checks payable to:**  
NABA – Nashville Chapter  
Post Office Box 111742  
Nashville, TN 37222

*For more information, contact LaTasha R. Barnes at (615) 344-2637 or Marshall  
Tabb at (615) 426-4011*



*"Lifting As We Climb"*